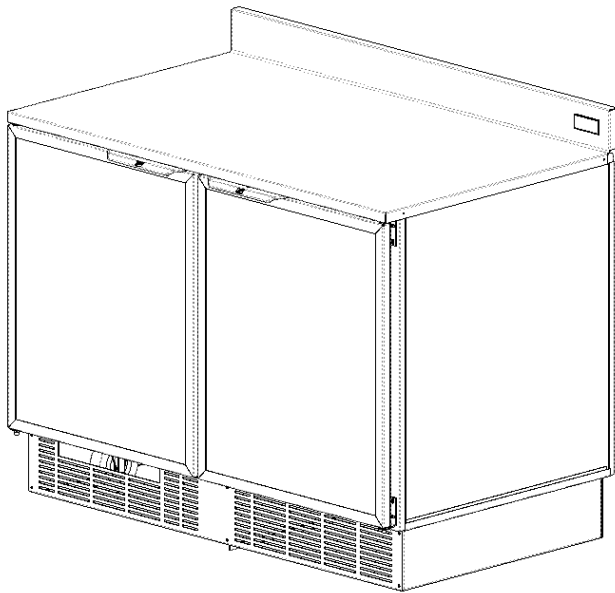




Your Solutions Partner

Specifications

F.O.B. Sedalia, Missouri 65301



Model RUF-48

OPTIONS:

- Color laminate panel inserts

Certifications:



ANSI/NSF7

DUKE MANUFACTURING CO.

2305 N. Broadway

St. Louis, MO 63102

800.735.3853 Toll Free

314.231.5074 Fax

www.dukemfg.com

SS-1088 RUF 48 Standard Back Counter

Approval Stamp(s):

PRODUCT INFORMATION:

PROJECT: _____

ITEM: _____

QUANTITY: _____

MODEL: RUF-48

NAME OF UNIT: Duke® Standard Refrigerated Back Counter

- RUF-48 48" Standard Refrigerated Back Counter

TOP:

- One piece, 18 gauge, 300 Series stainless steel
- 4" Riser at rear

BODY:

- Replaceable laminate on doors and body sides
- Kick plates are painted 16 gauge, A40 galvanized steel
- Casters are standard
- Blowing Agent for foam insulation - Ecomate (zero ODP, zero GWP, VOC exempt, Montreal and Kyoto compliant)

REFRIGERATION CABINET:

- Enclosed refrigerated cabinet
- 2 Insulated doors with replaceable gasket
- Doors have full length solid rod hinge design for durability
- 300 Series stainless steel interior
- Insulated with environmentally friendly foam insulation with zero Ozone Depleting Potential (ODP), zero Global Warming Potential (GWP), and is Kyoto and Montreal protocol compliant
- Cabinet will hold food cold in the range of 33F – 40F
- Plastic coated wire shelves supplied
- Interior storage is 11.09 cubic feet
- 6ft. Cord and plug

REFRIGERATION SYSTEM:

- Conventional air over coil
- 1/5 hp compressor (Fractional Horsepower/ Hermetically Sealed)
- Disposable filter accessible from the front of the unit
- Uses 513a Refrigerant

Refrigerated Back Counter: RUF-48

Catalog No. : RUF-48

A.I.A. File No. 35-C-13

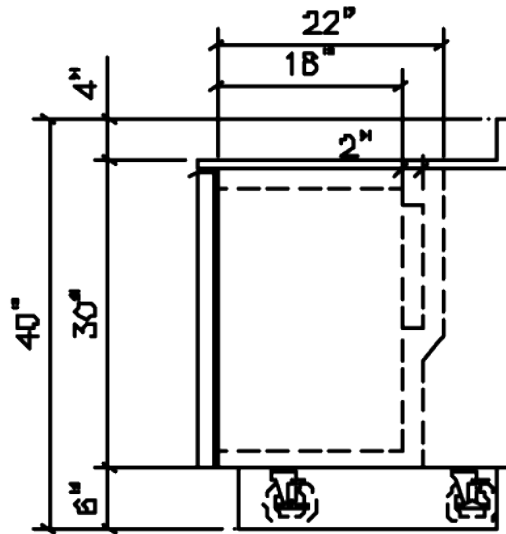
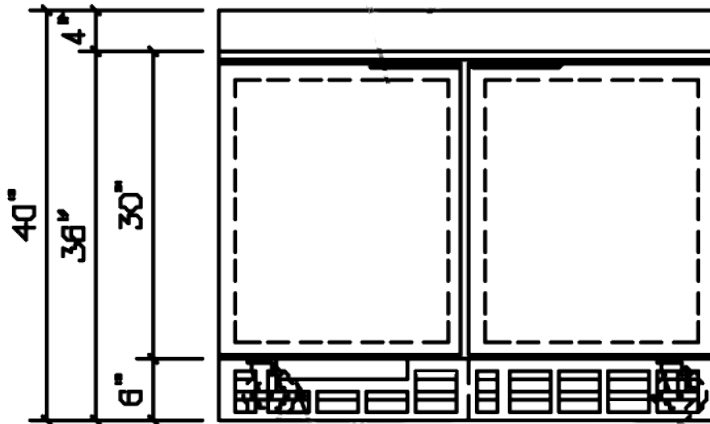
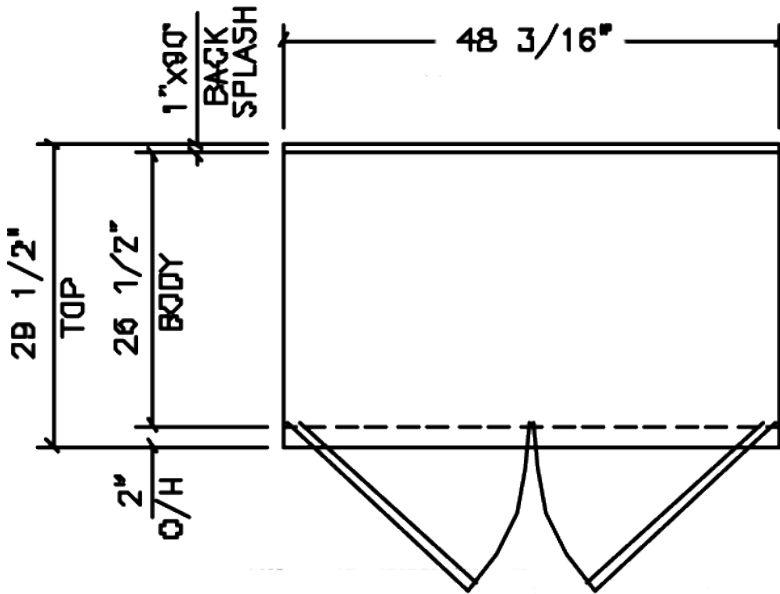
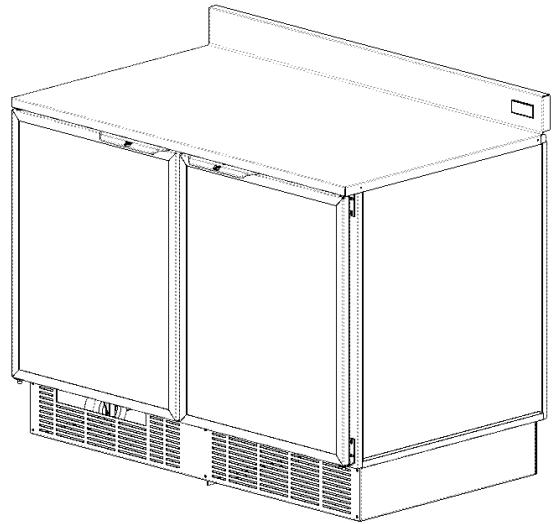
Specification subject to change

REV B 05/06/2019

RUF-48

A.I.A. File No.

Catalog No. : RUF-48



ELECTRICAL SPECIFICATIONS:

Model	Voltage	Amps	Hz	BTU/HR	HP	NEMA
RUF-48	120	4.2	60	1150	1/5	5-15P

DIMENSIONS:

Freight Class: 115

Model	Length		Height		Depth		Cubic Ft. Crated	Weight	
	in	cm	in	cm	in	cm		lbs	kg
2501649	48.09	122.15	40"	101.6	29.5	74.93	77	344	156.04

Refrigerated Back Counter: RUF-48



Duke Manufacturing Co.
2305 N. Broadway
St. Louis, MO 63102

Phone: 314-231-1130
Toll Free: 1-800-735-3853
Fax: 314-231-5074

www.dukemfg.com